



Johnny Appleseed  
Metropolitan  
Park District



We have something  
for **Everyone.**



## Table of Contents

### Welcome to Your Johnny Applesseed Metropolitan Park District.

This booklet covers the many aspects that each park within our jurisdiction has to offer. We cover everything from swimming at our Ottawa Metro Park Beach to hiking and observing wildlife at Kendrick Woods. The Park District has over 30 miles of trails for you to explore! These trails provide the opportunity for multiple recreational activities.

The Park District is comprised of five departments that work together to fulfill our mission. They encompass administration, maintenance, environmental education, law enforcement and land stewards. The departments work together to provide a safe, well maintained environment for the public to grow in their knowledge and understanding of the natural world. The Park District continues to maintain and upgrade facilities as needed and as the funding streams allow. We strive to find outside sources of funding, which include grants at the local, state, and federal level. This model helps ensure that local tax dollars are stretched to their fullest. We stay up on current trends within the parks and recreation profession and we are ever changing to meet the needs of the citizens of Allen County.

*Remember these parks are for YOU...Get out and enjoy them!*

#### FOR ADDITIONAL INFORMATION

Contact the Johnny Applesseed Metropolitan Park District:

2355 Ada Road  
Lima, OH 45801  
Phone: 419-221-1232

**Shelter Reservations and Program Registrations** can be made online at [jampd.com](http://jampd.com) or by calling the office at **(419) 221-1232**

You can visit us at [jampd.com](http://jampd.com) or any one of these social media sites.



Welcome .....	2
Table of Contents .....	3
History, Mission & Purpose .....	4
Things To Do .....	5
JAMPD Map .....	6
Agerter Road River Access .....	8
Allen County Farm Park .....	10
Deep Cut Historical Park .....	12
Fort Amanda State Memorial Park .....	14
Haver Ridge Metro Park .....	16
Heritage Park .....	18
Hermon Woodlands Metro Park .....	20
Kendrick Woods .....	22
Kendrick Woods - Cottonwood Trail Access .....	24
Kendrick Woods - Evans Archery Range .....	26
Lauer Historical Farm .....	28
Lippincott Bird Sanctuary .....	30
McElroy Environmental Education Center .....	32
McLean Teddy Bear Park .....	34
Miami and Erie Canal Towpath Trail .....	36
Robert K. Antibus Trail Access .....	38
Motter Metro Park .....	40
Ottawa Metro Park .....	42
Rotary Riverwalk/Ottawa River Bikeway .....	44
Veterans Freedom Flag Monument .....	46
Special Events .....	47
Park District Foundation .....	48
Friends of the Park / Volunteer .....	49
Photography Contest Photos .....	50



## History, Mission & Purpose

## Things To Do

### HISTORY

The Johnny Appleseed Metropolitan Park District was created in June 1972 according to Chapter 1545 of the Ohio Revised Code and is a separate political subdivision of the State of Ohio. The Park District currently has **15 park areas with over 1,500 acres** for your enjoyment! Whether you enjoy hiking, picnicking with family and friends, interpretive programs and guided nature walks, camping and swimming at Ottawa Metro Park, fishing and boating at the Allen County Farm Park, horseback riding at the Allen County Farm Park, bicycling the Rotary Riverwalk, there is something for **everyone!**

### MISSION

The Park District is a comprehensive park system of natural areas and preserves designed to enhance the quality of life of the citizens of Allen County by providing passive outdoor recreational and educational opportunities while conserving and protecting the natural resources of the area for future generations.

### PURPOSE

- Acquire lands for conversion into forest reserves directed toward the conservation of the natural resources of the State, including the wildlife.
- Acquire lands, within or outside of the district, of unique characteristics in forestry, ground cover, water, terrain, wildlife or historical significance.
- Create and promote the use of parks for the benefit and enjoyment of this and future generations.
- Search for and maintain an inventory of the natural areas.
- Provide education programs to stimulate an appreciation for the wonders and bounties of nature.
- Promote ecology, the study of plants and animals with reference to their environment and to the factors that control or have controlled their distribution.
- Keep informed of the various programs and funds to implement these goals and objectives.



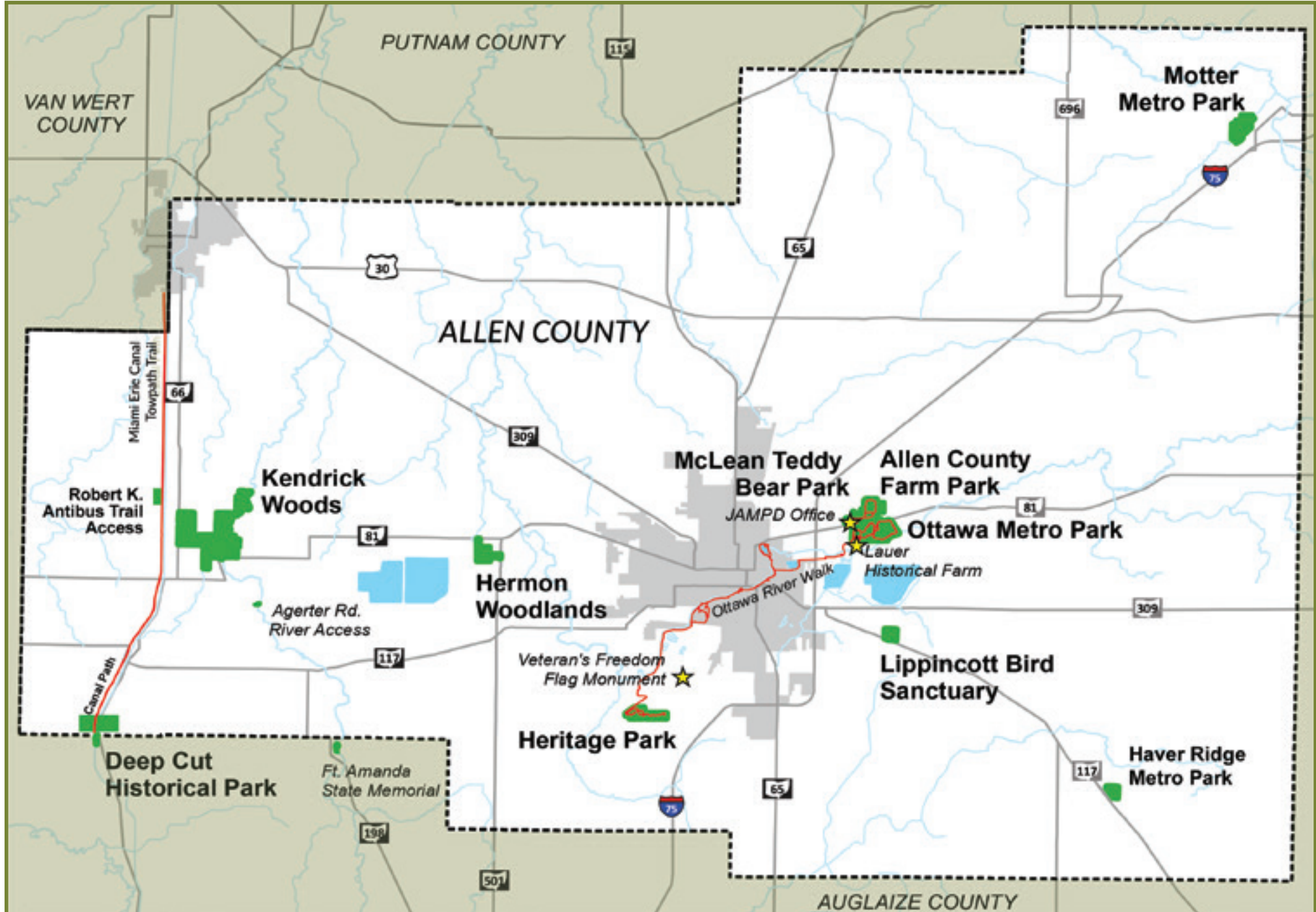
There are a variety of outdoor recreational opportunities afforded through the Park District. Some of which include:

- Picnicking
- Hiking/biking
- Running
- Disc Golf Course
- Swimming
- Boating
- Camping
- Fishing
- Archery
- and many more....

There are many reservable facilities within the Park District. There are 15 shelter houses, 2 reservable barns, a historic 1800s log cabin, and a historic home on the Lauer property. Please visit our website for more information or call the Park District office during normal working hours.

For reservations visit [jampd.com](http://jampd.com) or call the office at 419-221-1232.

# Johnny Appleseed Metro Park District Map





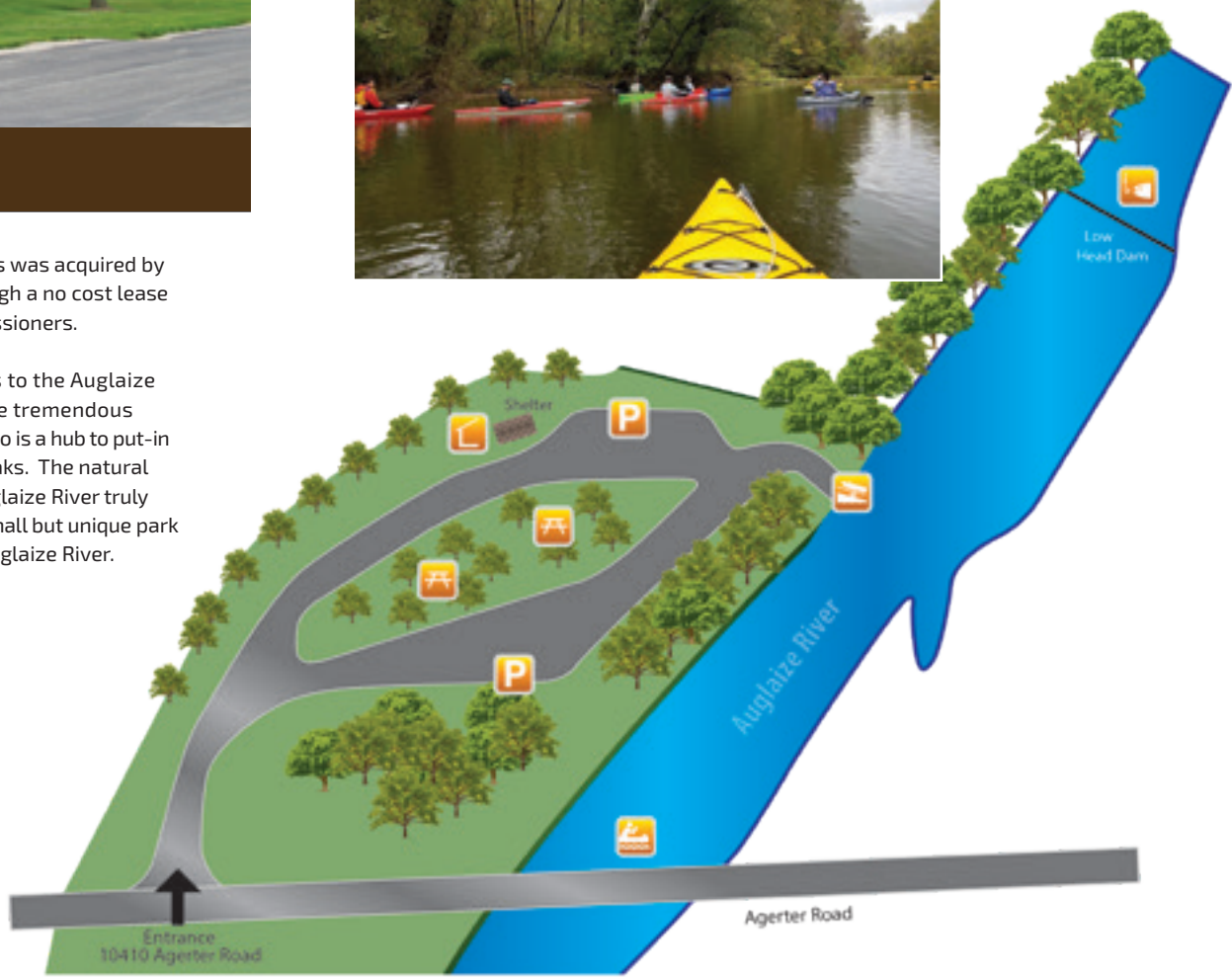
## Agerter Road River Access

**LOCATION**  
10410 Agerter Road  
Spencerville, Ohio 45887

- FEATURES**
- 3 acres
  - Picnic area
  - Canoe and kayak launch
  - Small picnic shelter

The Agerter Road River Access was acquired by the Park District in 1979 through a no cost lease with the Allen County Commissioners.

It provides recreation access to the Auglaize River. The river affords some tremendous smallmouth bass fishing. It also is a hub to put-in and take-out canoes and kayaks. The natural and historic beauty of the Auglaize River truly makes it one of a kind. This small but unique park is vital to recreation on the Auglaize River.





## Allen County Farm Park

### LOCATION

1582 Slabtown Rd.  
Lima, Ohio 45801

### FEATURES

- 63.8 acres
- Reservable barn (capacity 180)
  - Water, modern restrooms
  - Refrigerator
  - Serving counters
  - Banquet tables and chairs
- Open field
- Play equipment
- Concrete corn hole boards
- Sand volleyball court



The Farm Park has been in existence since 1982, through a long term, no cost lease with the Allen County Commissioners. Originally set aside for 45 acres, the property has grown to just over 63 acres with the donation of 18 acres from the Park District Foundation of Allen County.

This particular park is open seasonally and by reservation only.



There is a 2.5 mile bridle trail adjacent to the Farm Park. It runs through a variety of landscapes including wooded areas, agricultural fields, and open areas. The driveway and parking lot are just north of the entrance to the Farm Park. The bridle trail is free, open to the public, and handicap accessible during daylight hours.





## Deep Cut Historical Park

### LOCATION

22900 State Route 66  
Spencerville, Ohio 45887

### FEATURES

- 8.5 acres
- Large picnic area
  - Tables
  - Grills
- Shelter
- 1 mile hiking trail connects
  - North - 9 contiguous miles maintained by the Park District
  - South - runs through various towns to the Ohio River



Deep Cut Historical Park is so named because it is the deepest "cut" of the Miami and Erie Canal running from Lake Erie to the Ohio River. This former Ohio Department of Transportation rest stop is leased to the Park District at no cost. It provides access to over 45 miles of trail along the towpath of the Miami and Erie Canal. The towpath trail is a ten foot wide crushed limestone trail perfect for hikers, runners, bicyclists and mountain bikers.

The Park District maintains the section through Deep Cut, the Village of Spencerville maintains the section through the Village, and then the Park District maintains over 9 miles from the north corporation line of Spencerville to the south corporation line of Delphos.

The Park District Foundation of Allen County, in part with a generous donation was able to complete the Lee and Ruby Roebuck shelter in 2021. It is an enclosed shelter that is heated and cooled. It boasts a concrete countertop, ideal for serving food and drinks as well as a rustic cabin feel. It is a perfect facility for graduation parties, family get-togethers, and other events.





# Fort Amanda State Memorial Park

## LOCATION

22800 State Route 198  
Lima, Ohio 45806

## FEATURES

- 11 acres
- Reservable shelter
- ½ mile of hiking trails
- Water, restroom facilities
- War of 1812 monument
- Large, wooded, picnic area
  - Tables
  - Grills
- Fishing access to the Auglaize River

Fort Amanda was constructed in the fall of 1812 under the direction of Lt. Col. Robert Pogue who named it Amanda in honor of his twelve year old daughter. This was one of a series of forts running north from Piqua to Fort Meigs (present day Perrysburg), built by the order of General William Henry Harrison. These forts helped supply the army protecting the northwest from British invasion during the War of 1812. Soldiers built riverboats (also named pirogues) to transport soldiers and supplies along the Auglaize River. Fort Amanda saw no fighting during the war, but was an important link in the supply line.

The original Fort is no longer standing; a granite monument was constructed in 1915 at the site of the original fort. The monument, as well as the cemetery, can be viewed during daylight hours. Fort Amanda State Memorial Park is owned by the Ohio Historical Connection and maintained and operated by the Johnny Appleseed Metropolitan Park District.







# Haver Ridge Metro Park

**LOCATION**  
8335 Bellefontaine Road  
Harrod, Ohio 45850

- FEATURES**
- 61 acres
  - 2.45 miles of trails
  - Interpretive nature-based signage
  - Wetland complexes
  - Restored prairie habitat

Haver Ridge Metro Park was purchased and developed through a Clean Ohio Greenspace Conservation Fund grant. This park is unique in that the topography is unlike any other park within the district, the rolling hills were formed due to glaciers during the last ice age. The history of this park dates to 1876 and the Metzger/Lowry family, who maintained it as a working farm. The family had ownership of the property until the Park District purchased it in 2019.

It is named in dedication to long time Park Director, Kevin Haver. Kevin dedicated forty-two years of his life to public service for the citizens of Allen County. His love for nature is endless and through the conservation of natural resources found on this property, his forethought will continue to serve the people of Allen County for generations to come. There is plenty of wildlife to see on this property and conservation efforts will continue for years to come with the addition of this great park. We hope that you enjoy your time in this quiet and peaceful area.





# Heritage Park

The Park District accepted a deed for 108 acres from the federal government and the Lima Army Modification Center in 1973. Under President Nixon's "Legacy of Parks" program an additional 54 acres was acquired, bringing the total acreage to 162. The Lima Army Modification Center expanded and 81 acres returned to them. This left 81 acres, the current size, as Heritage Park.

As recently as 50 years ago the current acreage was pasture land. The land sat undisturbed which allowed for natural succession to begin, turning the land into a forest comprised of oaks, hickories, walnuts, and maples. Forest management is a priority to the Park District and the landscape will continue to change for years to come.

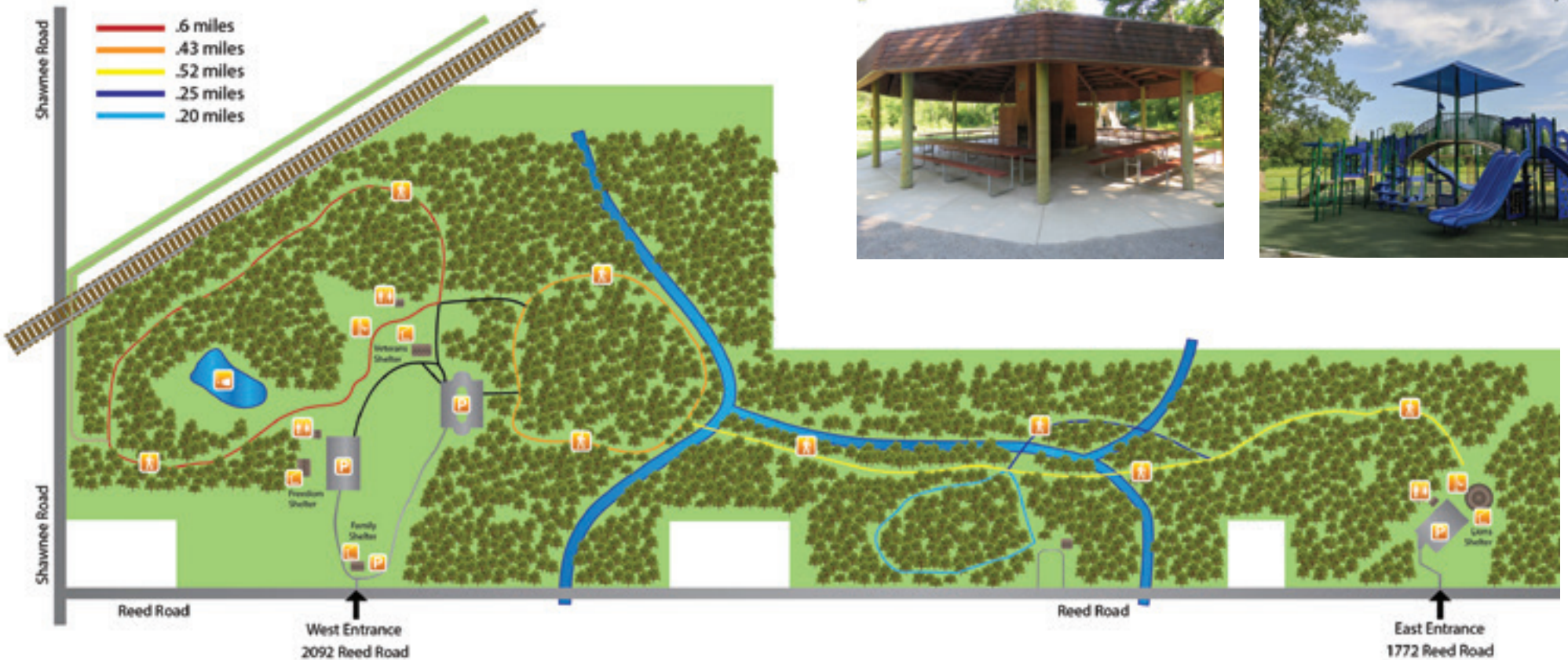
## LOCATION

West End – 2092 Reed Road  
Lima, Ohio 45804

Lion's Den – 1772 Reed Road  
Lima, Ohio 45804

## FEATURES

- 81 acres
- 3 reservable shelters
- 2 miles of hiking trails
- Play equipment
- Horseshoe courts
- Sand volleyball courts
- Water, restroom facilities
- 1 acre fishing pond (West End)
- Picnic area
  - Tables
  - Grills
- Rotary Riverwalk western terminus

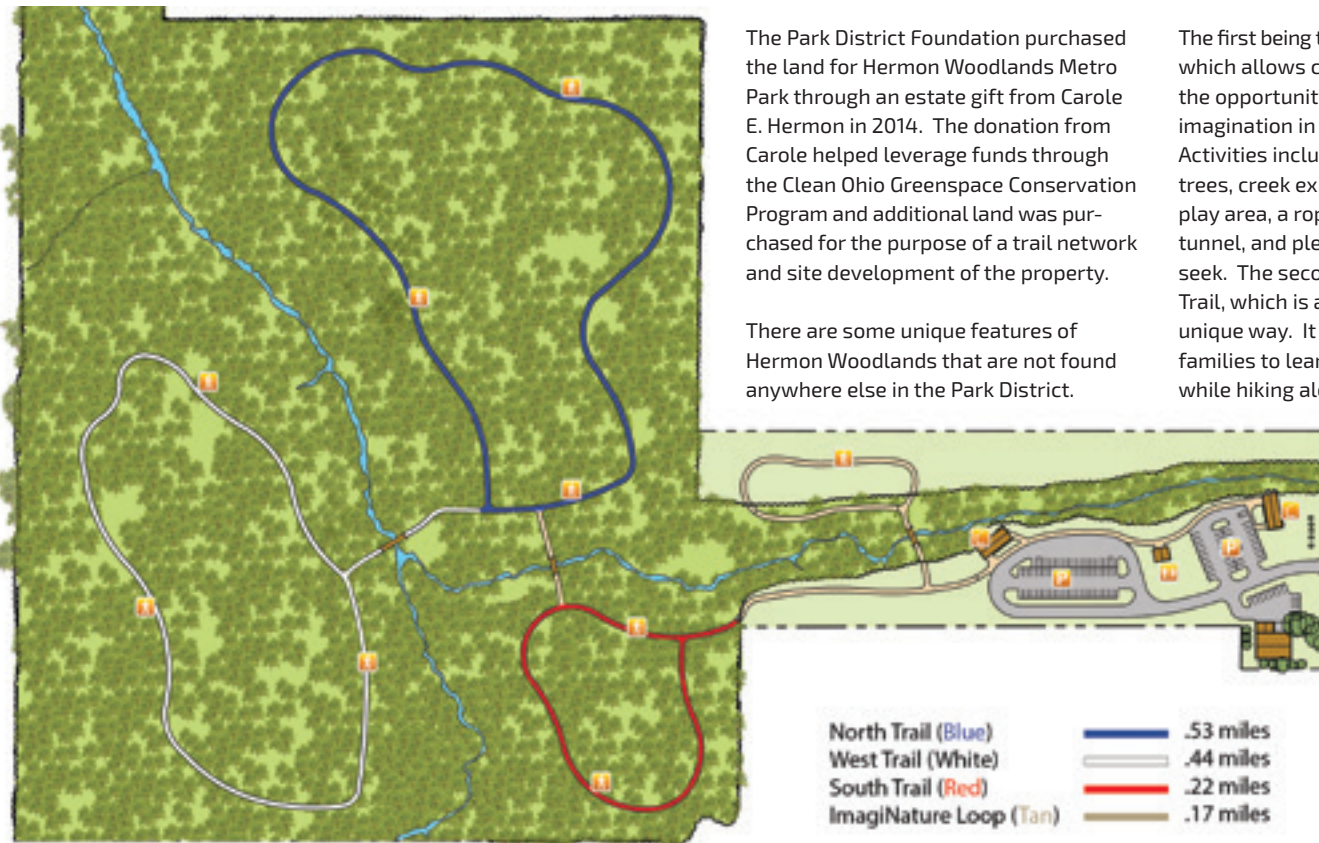




# Hermon Woodlands Metro Park

**LOCATION**  
 485 N. Wapakoneta Rd.  
 Elida, Ohio 45807

- FEATURES**
- 71 acres
  - 2 enclosed, reservable shelters
  - Water, modern restroom facilities
  - 2 miles of hiking trails
  - Children's "ImagiNature" Playscape
  - Storybook Trail



The Park District Foundation purchased the land for Hermon Woodlands Metro Park through an estate gift from Carole E. Hermon in 2014. The donation from Carole helped leverage funds through the Clean Ohio Greenspace Conservation Program and additional land was purchased for the purpose of a trail network and site development of the property.

There are some unique features of Hermon Woodlands that are not found anywhere else in the Park District.

The first being the ImagiNature Playscape which allows children and families the opportunity to play and use their imagination in the natural environment. Activities include fort building, climbing trees, creek exploration, sand and gravel play area, a rope swing, an underground tunnel, and plenty of areas for hide and seek. The second being the Storybook Trail, which is a great way to read in a unique way. It is a wonderful way for families to learn and read together while hiking along the south trail.



# Kendrick Woods

## LOCATION

971 N. Defiance Trail  
Spencerville, Ohio 45887

## FEATURES

- 556 acres
- 3 reservable shelters
- Large picnic area
  - Tables
  - Grills
- Restroom facilities
- 1 ¼ acre fishing pond
- Over 7 miles of trails (hiking & cross country ski)
- .33 mile "All Peoples Trail" boardwalk (handicap accessible)
- Kiracofe Prairie
- Evan's Archery Range
- Wetland
- Concrete cornhole boards
- Sand volleyball court
- Play equipment

The initial acquisition of Kendrick Woods was 181 acres in 1976 through a bequest by Florence Kendrick along with a Land and Water conservation Fund Grant from the federal government. An additional 25 acres was purchased with conservation easements, with remaining federal grant money in 1985 and 1986. The Park District purchased an additional 11 acres in 1990 and 92.5 acres in 1999. Various other land purchases have been made since that time, utilizing donations, grants, and other sources of money to get Kendrick Woods to the size it is today.

There is a section of the park that is dedicated as a State Nature Preserve by the Ohio Department of Natural Resources - Division of Natural Areas and Preserves. It is also considered an Important Bird Area by the Audubon Society due to the unique habitats the park offers for migratory stopovers, as well as, the fact that ten state listed birds have been documented in the area. There are countless other plant and animal species to discover and enjoy.



Kendrick Woods



## Kendrick Woods – Cottonwood Trail Access

### LOCATION

10659 Zion Church Road  
Spencerville, Ohio 45887

### FEATURES

- Northern most access to the 556 acres of Kendrick Woods
- Overlook deck for wildlife viewing
- 2 miles of hiking trails
- Adjacent to the Auglaize River

The Cottonwood Trail Access was developed in 2019 with the help of an enhancement grant from the Clean Ohio Greenspace Conservation program. The land was purchased through the same program back in 2014. It remained untouched for many years and served as great wildlife habitat. Today, the property is still great for wildlife, you may see White-tailed deer, Eastern Wild Turkey, or any other host of species on a hike in this beautiful section of Kendrick Woods. With over two miles of hiking trails traversing the property and an overlook deck, this property is perfect for any wildlife enthusiast.

The Park District encourages everyone to visit the property but would like to remind everyone to pay attention to the water levels of the Auglaize River. If flooding is occurring, the trails will be closed for public safety reasons as much of the trail system goes under water during a flood event. We hope that you enjoy your time here and leave with great memories that you can cherish for a lifetime.





## Kendrick Woods – Evans Archery Range

### LOCATION

1376 N. St. Mary's Road  
Spencerville, Ohio 45887

### FEATURES

- Elevated shooting deck
- Arrow holders
- Bow racks

The Evan's Archery Range is named in honor of Richard "Dick" B. Evans. Mr. Evans was a longtime supporter of the Park District and loved the outdoors. His love of hunting and archery was unparalleled. He donated the funds to construct the Archery Range in 2016, shortly before passing away. His gift has given the citizens of Allen County, especially archers, a place to practice and hone their skill.

The range was constructed during the summer of 2016. The talented maintenance staff of the Park District constructed the entirety of the range, in house. It took approximately three months to construct and will remain a destination for archers from around the county and region.



The range consists of three separate courses. The first course consists of an elevated platform with targets at 10, 20, 25, 30, 35, and 40 yards respectively. The second course is a beginner course and has targets ranging from 5, 10, 15, and 20 yards. Lastly, a professional course is located on the north end of the complex with targets ranging from 25, 35, 45, 50, and 60 yards.

The use of field points is permitted. The use of broadheads is strictly prohibited and will be enforced by Ranger personnel. The range is open daily from dawn to dusk and users are asked to sign-in when visiting the range.





# Lauer Historical Farm

**LOCATION**  
 800 Roush Rd.  
 Lima, Ohio 45801

- FEATURES**
- 65.3 acres
  - Reservable facilities:
    - Historic Home
    - Bank Barn
    - Celebration Garden Venue
    - Wedding Pergola
  - Water, modern restroom facilities
  - Connected to Ottawa Metro Park and the Ottawa River Bikeway



The Lauer Historical Farm is a very unique park within Allen County. The property has a rich history dating back to the mid 1830's when the farm was first put on the tax rolls to help fund the State of Ohio's efforts to construct the Miami and Erie Canal. The Park District acquired the park in 2006.

The vision and name for the Lauer Historical Farm came from the first Park District commissioner, Ann Lauer, who was very instrumental in the founding of the Park District in 1972 and whose ideas and legacy still live on today. The project was finished in the fall of 2017, with a few more additions to be made in future years.

It is a working historical farm dated back to the mid 1930's through World War II in the mid 1940's. There are various reservable facilities on the property to accommodate weddings, family reunions, corporate retreats, and the like. This farm will be a work in progress for years to come with an endless amount of opportunity for historically accurate programming and farming practices.





# Lippincott Bird Sanctuary

## LOCATION

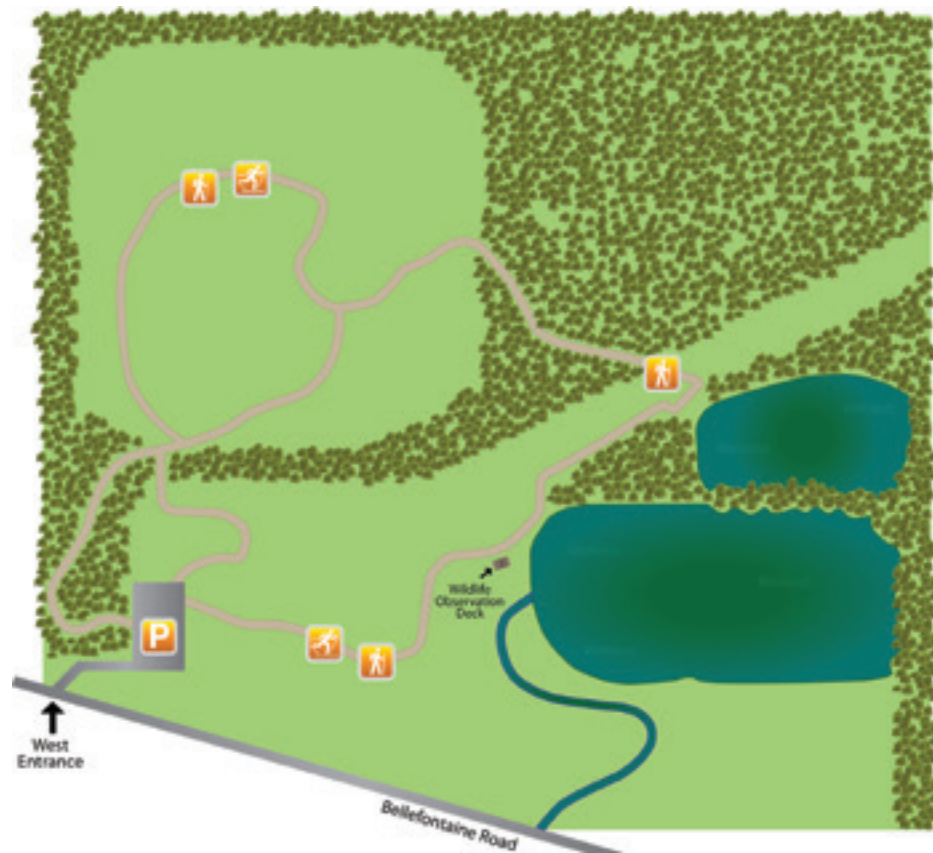
3093 Bellefontaine Rd.  
Lima, Ohio 45804

## FEATURES

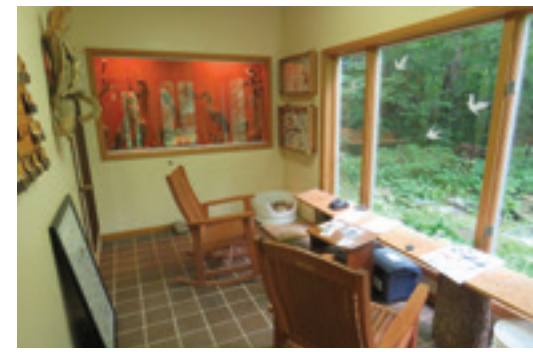
- 37 acres
- 0.6 mile hiking trail
- Wetland complexes totaling 5 acres
- Wildlife observation deck
- Interpretive nature based signage

The land that is currently the Lippincott Bird Sanctuary was donated to the Park District by Bill Lippincott in 1998. Bill Lippincott was a former City of Lima Forester who would share his love of trees and nature to any and all who listened. There is a diverse array of habitats present at the sanctuary ranging from upland prairies to wetlands to forest. This habitat in turn creates an opportunity for a variety of wildlife and plant life found in the park.

There are many programs offered by the Park District at the sanctuary including bird walks, butterfly walks, our Walking Through Autumn series (every fall), bird banding, and many others. This is a place for one to go unwind and walk to discover what nature really has to offer in northwest Ohio.







# McElroy Environmental Education Center

**LOCATION**  
 Park District Office  
 2355 Ada Rd.  
 Lima, Ohio 45801

## FEATURES

- Large environmental education classroom
- Environmental library
- Trails connecting to McLean Teddy Bear Park
- Wildlife viewing room
- Historic gardens

The McElroy Environmental Education Center (MEEC) is located at our Park District office and is named after our first Chief Ranger of the Park District, Nate McElroy Jr. who served faithfully in that capacity for six years. Nate was a genuine person who had a love for children. He would take the time to stop and talk to kids about life and the natural world. He passed away after a courageous battle with cancer in 1987.

His legacy still lives on today through the MEEC with nature based programming ranging from preschool age children to older adults. Topics range from wildlife (birds, mammals, insects, etc.) to plants (trees, shrubs, grasses, etc.). It is amazing to see the sparkle in a child's eye once they have completed a program in this wonderful setting.

*Want more information on our programs?*

Contact our Environmental Education Department by phone at (419) 221-1232, sign up online at [www.jampd.com](http://www.jampd.com) or email [naturalists@jampd.com](mailto:naturalists@jampd.com).





There are a variety of natural habitats found at McLean Teddy Bear Park for people of all ages to enjoy. The trails that are developed through the park afford great wildlife viewing, as well as, a great place to run and play.

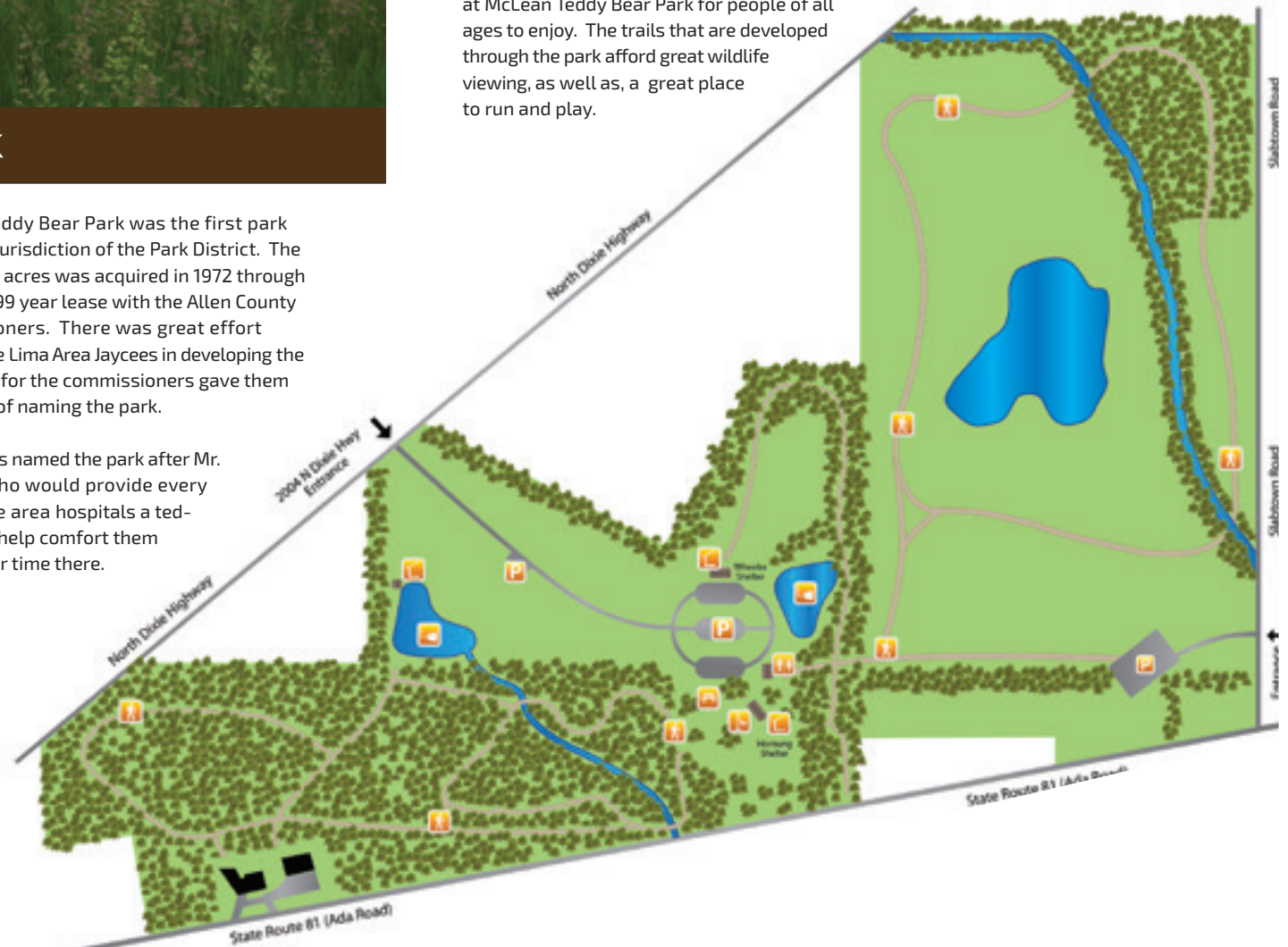
# McLean Teddy Bear Park

**LOCATION**  
2004 N. Dixie Highway  
Lima, Ohio 45801

- FEATURES**
- 133.9 acres
  - 2 reservable shelters
  - Large picnic area
  - Tables
  - Grills
  - Sand volleyball court
  - Concrete cornhole boards
  - 3 fishing ponds
  - Play equipment
  - Water, modern restroom facilities
  - 3.5 miles of hiking trails

McLean Teddy Bear Park was the first park under the jurisdiction of the Park District. The original 42 acres was acquired in 1972 through a no cost, 99 year lease with the Allen County Commissioners. There was great effort through the Lima Area Jaycees in developing the park; therefor the commissioners gave them the honor of naming the park.

The Jaycees named the park after Mr. McLean, who would provide every child in the area hospitals a teddy bear to help comfort them during their time there.



McLean Teddy Bear Park



# Miami and Erie Canal Towpath Trail

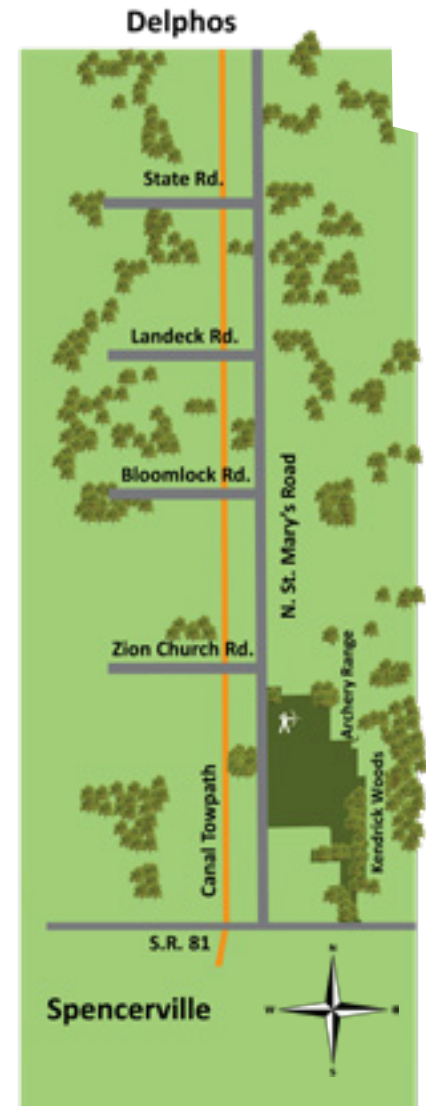
**LOCATION**  
Miami and Erie Canal

- FEATURES**
- 8 mile trail
  - Constructed of crushed limestone
  - Perfect for:
    - Walkers
    - Hikers
    - Joggers
    - Runners
    - Bicyclists
    - Birders
    - Wildlife enthusiasts
    - And anyone else who wants to get outside!



The Miami and Erie Canal was constructed to help transport goods and services from Toledo to Cincinnati and various points in between. Construction of the canal began in the mid 1820's and was completed in 1845. The year the canal saw the most use was in 1851, that year there were over 400 boats in use along the canal. The towpath was a major part of the success of the canal, as it gave the mules that pulled the canal boats a place to walk. Today, the canal is still used, but with a different purpose. The transportation aspect of the canal is still alive, in the form of passive recreation (hiking, walking, jogging, bicycling, etc.).

The Johnny Appleseed Metropolitan Park District with a long term, no cost lease from the Ohio Department of Natural Resources has enhanced the towpath between the Village of Spencerville and the City of Delphos (approximately). The enhanced portion ties in to the southernmost portion of the canal towpath and extends south past Dayton and into Cincinnati. The enhancements were done in phases, much like the way the canal was built, which gives the trail a unique feel. Please respect the history of the canal, we hope your visit is one to remember!



The towpath trail, depicted in red, runs from the boundaries of Old Acadia Park on the northern corporation line in the Village of Spencerville to the southern corporation line in the City of Delphos. The stretch is approximately eight miles long.



## Robert K. Antibus Trail Access

### LOCATION

12395 Zion Church Road  
Spencerville, Ohio 45887

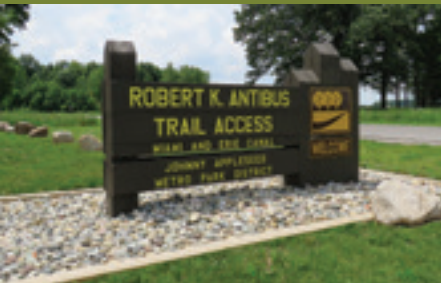
### FEATURES

- 12 acres
- Historic signage at trail entrance
- Family shelter (non-reservable)
- Main access to the Miami and Erie Canal Towpath Trail
- Adjacent to the Buckeye Trail
- Adjacent to the North Country National Scenic Trail

The Robert K. Antibus Trail Access is named and dedicated to long-time Park District Commissioner Dr. Robert "Bob" K. Antibus. Bob has faithfully served the citizens of Allen County as a park commissioner since January of 1993. He is the longest serving commissioner in the Park District's history. Bob is a retired professor of biology, having taught at Virginia Polytechnic Institute and State University, University of Montana, Clarkson University and Bluffton University. He is well-known and respected in the field of mycology (study of fungi) and is often called upon by professionals for identification purposes.

Volunteering has and continues to be an important part of Bob's life, serving as a volunteer naturalist, hike leader, special event participant and as a trustee of the Park District Foundation of Allen County.

This trail access is dedicated in honor of Bob's lifetime of service and commitment to natural resources. We hope that you enjoy your time here and that you get out and hike the ever-popular Miami and Erie Canal Towpath Trail, which is also part of the Buckeye Trail and the North Country National Scenic Trail.



Robert K. Antibus Trail Access



# Motter Metro Park

## LOCATION

10740 Columbus Grove-Bluffton Rd.  
Bluffton, Ohio 45817

## FEATURES

- 105 acres
- 1.5 mile mowed grass trail
- Nature based interpretive signage (2018)
- Wetland
- Little Riley Creek

The Motter Metro Park was acquired through two parcels, one in 2006 and the other in 2009. These were both purchased using the Clean Ohio Greenspace Conservation Fund, a state grant program that helps conserve greenspace. The parcels were in row crop agriculture when purchased and were planted in prairie grasses to help restore more native grassland habitat.

The Little Riley Creek runs through the property which provides critical habitat for wetland and water species of plants and animals. The Park District was successful in obtaining an enhancement grant from the Clean Ohio Greenspace Conservation Fund for nature based interpretive signage in 2018. In future years a wildlife observation deck and wetland mitigation project will be added at Motter Metro Park.





The Ottawa Metro Park was acquired through a long term lease by the Allen County Commissioners in 1991. The park began to expand in the following years with the addition of three reservable shelters, restroom facilities, and a NatureWorks Grant to build a beach and beach house facility. Visitors can spend the day fishing on Lima Lake, attend an amphitheater program during the summer months, or play a round of disc golf.



The campground is comprised of 30 sites with water and electric hookup. There is a shower house and restroom for use by campers, as well. The Evan's Arboretum offers a peaceful walk through the back of the property, outlining the historic use of native trees to the area. Lastly, the park is the eastern terminus for the Rotary Riverwalk and the Ottawa River Bikeway, which offers great recreational opportunities such as running, walking, and biking.



# Ottawa Metro Park

## LOCATION

2632 Ada Rd.  
Lima, Ohio 45801

## FEATURES

- 287 acres
- Swimming beach
- Campground
- 89 acre Lima Lake
  - Boating
  - Fishing
- 18 hole disc golf course
- Playground equipment
- Sand volleyball court
- Amphitheater
- Horseshoe pits
- 3 reservable picnic shelters
- Paved trail for hiking, walking, running, and biking
- Eastern terminus for the Rotary Riverwalk/Ottawa River Bikeway





## Rotary Riverwalk/Ottawa River Bikeway

It was in anticipation of the Lima Rotary Club's 75th anniversary in 1992 that the idea of a "Riverwalk" was conceived. The Rotary Club partnered with the Johnny Appleseed Metro Park District, the City of Lima, BP, and other numerous businesses in the community to complete the first 4.2 mile phase of the corridor development along the Ottawa River.

The first phase extended from Heritage Park in Shawnee Township northeast to the Collett Street Recreation Area in Lima.

The City of Lima initiated the Ottawa River Corridor Study in 1996. The Riverwalk is designed to serve the citizens of Lima and Allen County as a safe alternative transportation route to Lima's central business district, YMCA, and numerous other parks, schools, and neighborhoods.

The Riverwalk continues to be a success due to the cooperation and collaboration between the City of Lima, township trustees, the Johnny Appleseed Metropolitan Park District and many private landowners along the way. The connecting link was completed and dedicated in July of 2010, which connects Heritage Park through the City of Lima to the Ottawa Metro Park on the east side of Allen County.





## Veterans Freedom Flag Monument

### LOCATION

1191 Buckeye Rd.  
Lima, Ohio 45804

### FEATURES

- Largest stationary flag in the United States
- Walk path around monument



Located adjacent to the Joint Systems Manufacturing Center, the Veterans Freedom Flag Monument stands proud to salute, thank, and honor all U.S. veterans of the past, present, and future. The Veterans Freedom Flag Monument is the largest known permanent flag monument in the United States.

Each tower is made of red, white and blue granite "bricks" engraved to honor our nation's veterans. In future years expansion and development of a museum in the building behind the monument is a priority. For information on ordering bricks and additional facts of the Veterans Freedom Flag Monument, visit the website [www.uawfreedomflag.com](http://www.uawfreedomflag.com)



## Special Events

### APPLE FESTIVAL

This is a two-day event that runs biennially on even numbered years during the last weekend of the month of September. There are demonstrations on apple butter making and antique cider presses, showing the old fashioned way of making apple cider. There is something for everyone to enjoy whether it be hay rides, on-stage entertainment, children's crafts, or the food vendor trucks. This is a popular family-friendly event that is free and open to the public.



### MAPLE FESTIVAL

This event is a two-day event showcasing the process that maple syrup has been manufactured throughout history. Guided hikes offer glimpses into the way Native Americans, early settlers, and current producers make maple syrup. This is a free family-friendly event that takes place biennially, on even years during the first weekend in March.





# Park District Foundation

A Wise Way to Share!

The Park District Foundation of Allen County is a non-profit corporation operated exclusively for the benefit of the Johnny Appleseed Metropolitan Park District. The Foundation provides the means whereby anyone can share in the fine work of the Park District through planned giving.

The Foundation's "Planned Giving Program" provides support for the Park District both during and after the lifetime of its donors. Substantial tax and financial benefits are realized by those contributing to the Foundation.

## OPPORTUNITIES FOR SHARING

Many gifts to the Park District Foundation will be in the form of cash. However, gifts may have various forms. They could be:

### MEMORIALS

By giving in memory of another person, a thoughtful, tangible, lasting remembrance can be created.

### TRUSTS

A living gift; an investment that combines lifetime income with unselfish sharing.

### LIFE INSURANCE

Endowment  
For general or specific capital projects and programs.

### LAND

Open or occupied space including property of historic or natural value.

### BEQUESTS

The naming of the Park District as a beneficiary in your will.

### ASSETS

Outright gifts of stocks, bonds, or personal property.

## BENEFICIARY DESIGNATION

The Park District Foundation of Allen County may be named the beneficiary of your pension plan. After your lifetime, its assets will then come directly to the Foundation, avoiding delay, the cost of Probate Court, and considerable estate tax.

## VALUABLES

The value of items such as artwork, antiques, stamps, coins, jewelry, rare books, rugs, etc. may be claimed as a charitable contribution in income tax calculation.

## OTHER ASSETS

Your gift of real property, in any form, may be converted to income-producing investments.

## SHARING OF ASSETS

If it is your wish that the assets of your estate be divided with other beneficiaries, you may provide that a portion of the proceeds from your estate be given to the Foundation.

## WHO BENEFITS?

EVERYONE! Park District facilities and programs are designed to be enjoyed by everyone from the youngest to the oldest and from the very active to the physically impaired. Your gift, along with those from others, will enable the Park District to expand its services and facilities for ALL visitors to enjoy.

In addition, existing and future acquired natural areas, preserves, and wildlife sanctuaries will be protected against other forms of development.

Gifts of money may be used either for a project specified by the donor or to provide interest income for unspecified purposes. The monetary gift itself cannot be used to defray the costs of day-to-day operations. Thus, the benefits gained from any gift will extend throughout many lifetimes.



## Friends of the Park Volunteer



Friends of the Parks is an organization associated with the Johnny Appleseed Metropolitan Park District. Donations from Friends of the Parks enable the Park District to ensure the continuance of environmental education programming, purchase facilities for the parks, and help protect the natural resources of Allen County. Your membership entitles you to a discount on shelter house reservations.

Friends can become as involved with the Park District as they desire. Many help at the Maple and Apple Festivals, as well as other Park District events.

*Support your Park District. Join Friends of the Park! Visit our website to complete the application and mail to the Johnny Appleseed Metropolitan Park District, 2355 Ada Road, Lima, OH 45801.*



Join our Metroparks Volunteer Program and make a difference in the community. Young, old, or in between, all of our volunteers have something great to offer! Your dedication and hard work will not only bring you satisfaction, but will support the efforts and goals of the Park District as well! There are no minimum hours needed to volunteer.

Volunteer opportunities available are as diverse as the volunteers themselves. Opportunities include, but are not limited to, the following:

- Nature trail guiding (Park District offers training)
- Gardening (wildflowers and herbs)
- Butterfly and Bluebird Trail Monitoring
- Pioneer Skills Demonstration
- Woodworking/Carpentry
- Office Assistance
- Festivals
- Displays/Artwork
- Photography
- Drama
- Storytelling
- Maintenance /litter pick-up/tree planting

*If you are interested in volunteering please complete the Volunteer Enrollment Form on our website and return to the Volunteer Coordinator at [volunteers@jampd.com](mailto:volunteers@jampd.com) or mail to Johnny Appleseed Park District, 2355 Ada Road, Lima, OH 45801. For questions, please call the Park District office at 419-221-1232.*

Photography contest entries.

Photography contest entries.



# 5 Core Values and Life Giving Statements

## VISITOR CARE

We preserve safe recreational spaces through thoughtful park design and engaging interactions. We work hard to provide an atmosphere of security and comfort through consistently evaluating all aspects of park operations while maintaining and monitoring the parks and facilities for all to enjoy.

## EDUCATION

We strive to continually expand our knowledge, allowing us to provide exciting and inspirational programming through unique educational experiences that connects EVERYONE to the natural world.

## QUALITY OF LIFE

We establish an atmosphere that is inviting, connecting, and preserving of our county's natural places. We encourage people to get outdoors, explore, and take in fresh air to promote their physical and emotional health.

## EMPLOYEE FULFILLMENT

We create an encouraging culture where employees enjoy coming to work to utilize their knowledge and experience as park and recreation professionals. We work hard every day to become better for you and for each other, through hands on leadership, teamwork, motivation and innovative ideas.

## PUBLIC SERVICE

***These are YOUR parks!*** With honor and integrity, we deliver a positive, friendly, and approachable experience for everyone. We endeavor to be trustworthy stewards of the financial and natural resources that you have entrusted to us.